

Tom A340

Maintenance Facility Planing

MFP



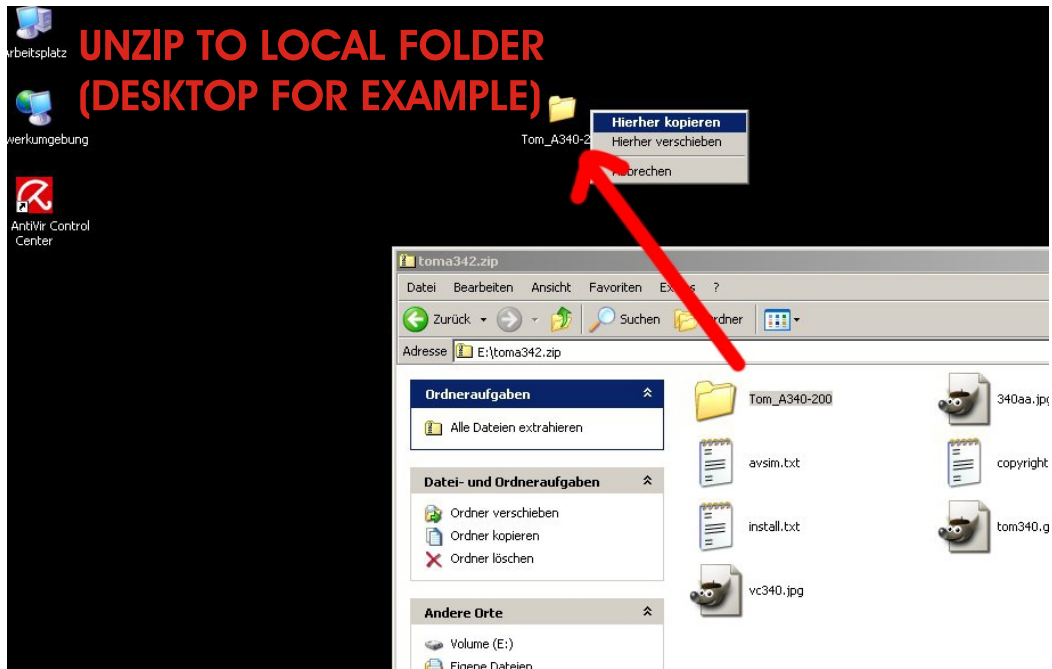
Version 1.0 02/2008

Tom A340

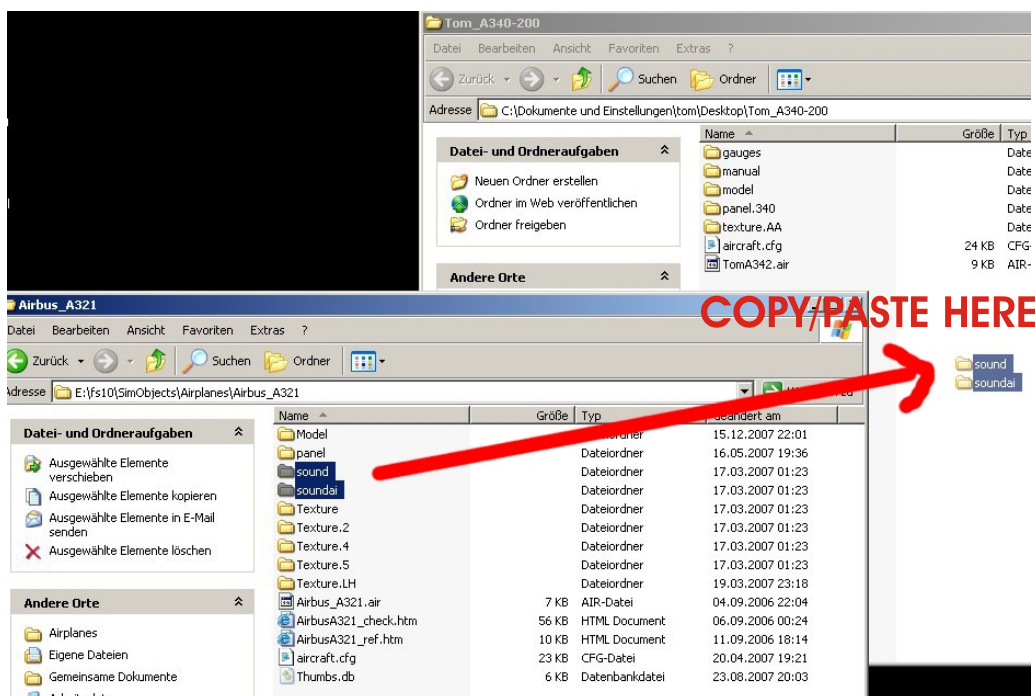
Maintenance Facility Planing MFP

1. Installation in FSX

- 1) Unzip **TOM342.ZIP** to your desktop



- 2) Copy and paste the complete **sound** and **soundai** subfolder from your default **Airbus_A321** folder into the new **Tom340_200** folder.



Version 1.0 02/2009

Tom A340

Maintenance Facility Planing MFP

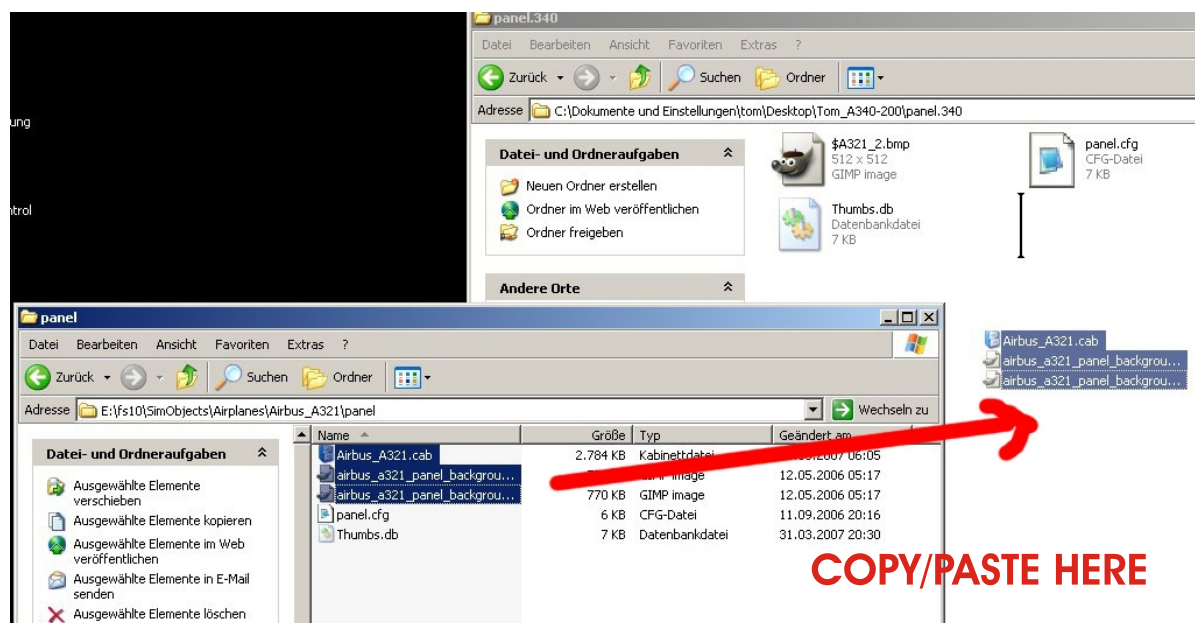
3) Copy and paste the following files from your default **Airbus_A321/panel** folder into the new **Tom340_200/panel** folder.

Airbus_A321.cab

airbus_a321_panel_background.bmp

airbus_a321_panel_background_night.bmp

Do not copy other files from this folder !!



Tom A340

Maintenance Facility Planing MFP

4) Copy and paste the following files from your default **Airbus_A321/Texture** folder into the new **Tom340_200/texture.AA** folder.

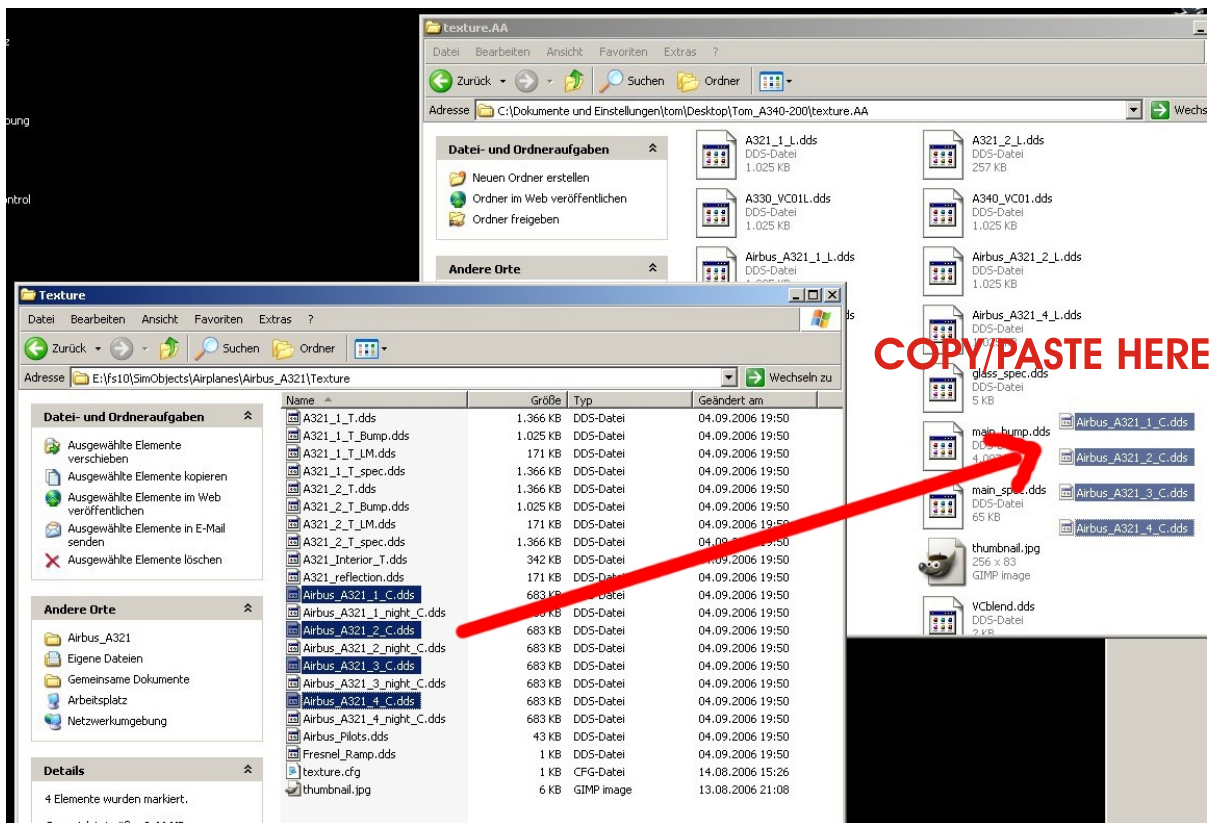
Airbus_A321_1_C.dds

Airbus_A321_2_C.dds

Airbus_A321_3_C.dds

Airbus_A321_4_C.dds

Do not copy other files from this folder !!

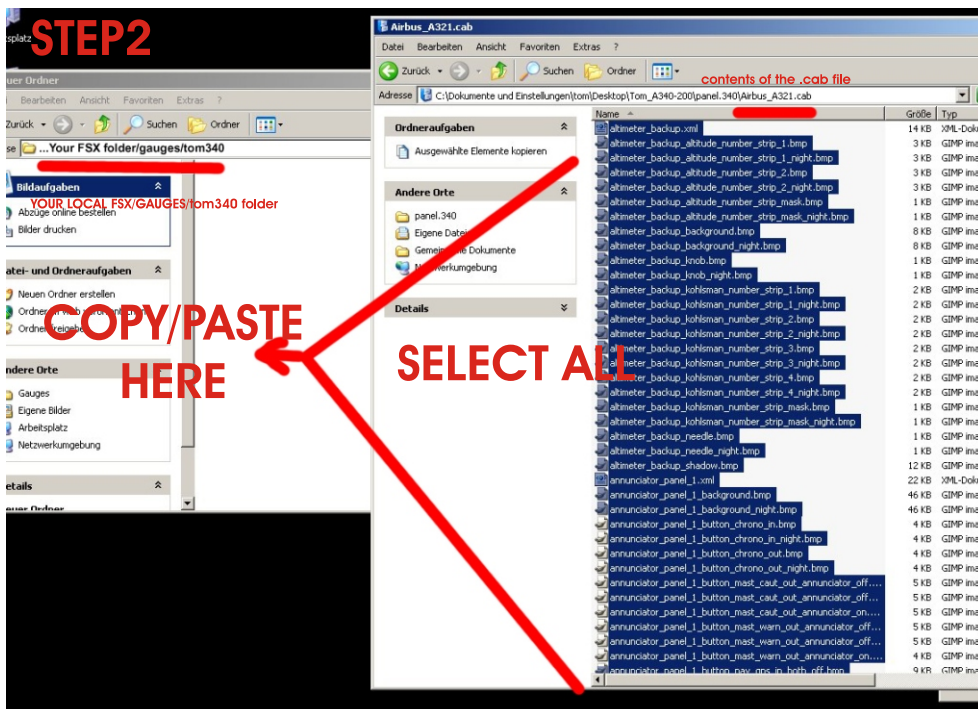
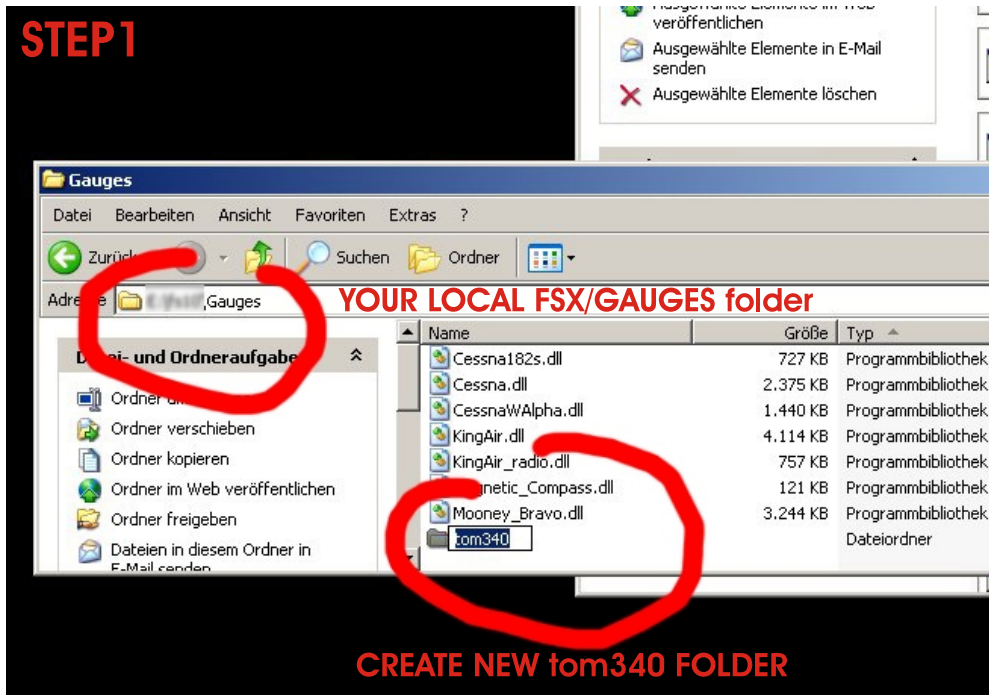


Version 1.0 02/2009

Tom A340

Maintenance Facility Planing MFP

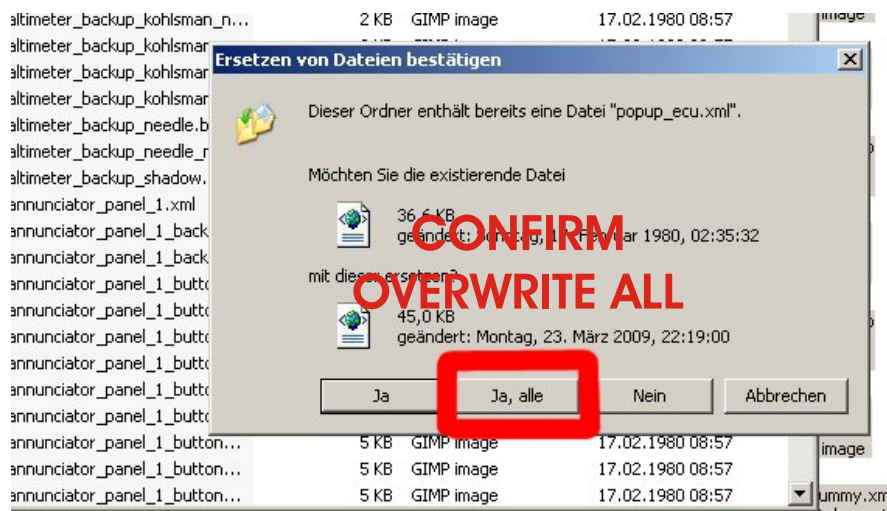
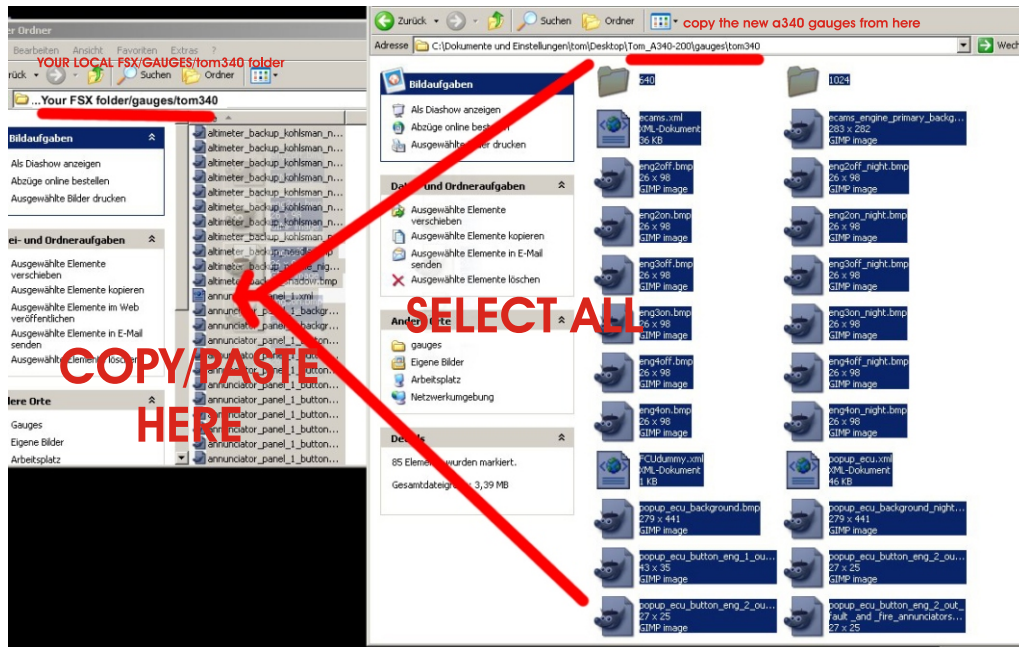
- 5) Create a new subfolder into your default **FSX/gauges** folder, rename it **tom340** and unzip all contents from your **Tom_A340-200/panel/Airbus_A321.cab** file into the new **FSX/gauges/tom340** subfolder.



Tom A340

Maintenance Facility Planing MFP

- 6) Copy alle files from your **Tom_A340-200/gauges** folder into the new **FSX/gauges/tom340** and **overwrite** existing files in that folder!



- 7) Move the new folder **Tom340_200** from your desktop to your **FSX aircraft folder**.
Usually "**C:\Program Files\Microsoft Games\Microsoft Flight Simulator X\SimObjects\Airplanes**"

- 8) Dont forget to unzip all files from the **lighteffects** folder of the zip into your **FSX/effects** folder

Version 1.0 02/2009

Tom A340

Maintenance Facility Planing MFP

2. KnownBugs

1) Disapearing or flashing lights:

Try to increase the "NUM_LIGHTS" in the fsx.cfg from 8 to 10

2) Flight envelope protection (Fly by wire)

If you want to activate the FSX fly by wire function, just open the [aircraft.cfg](#) and remove the // in front of the entrie [fly_by_wire=1](#) of the [\[airplane_geometry\]](#) section.

3) The flightmodel is not as good as it should be since i am not an FDE specialist, so this is all i can do for now. Feel free to change wahtever you want.